



Bury Clinical Commissioning Group

Your health, your care, your say

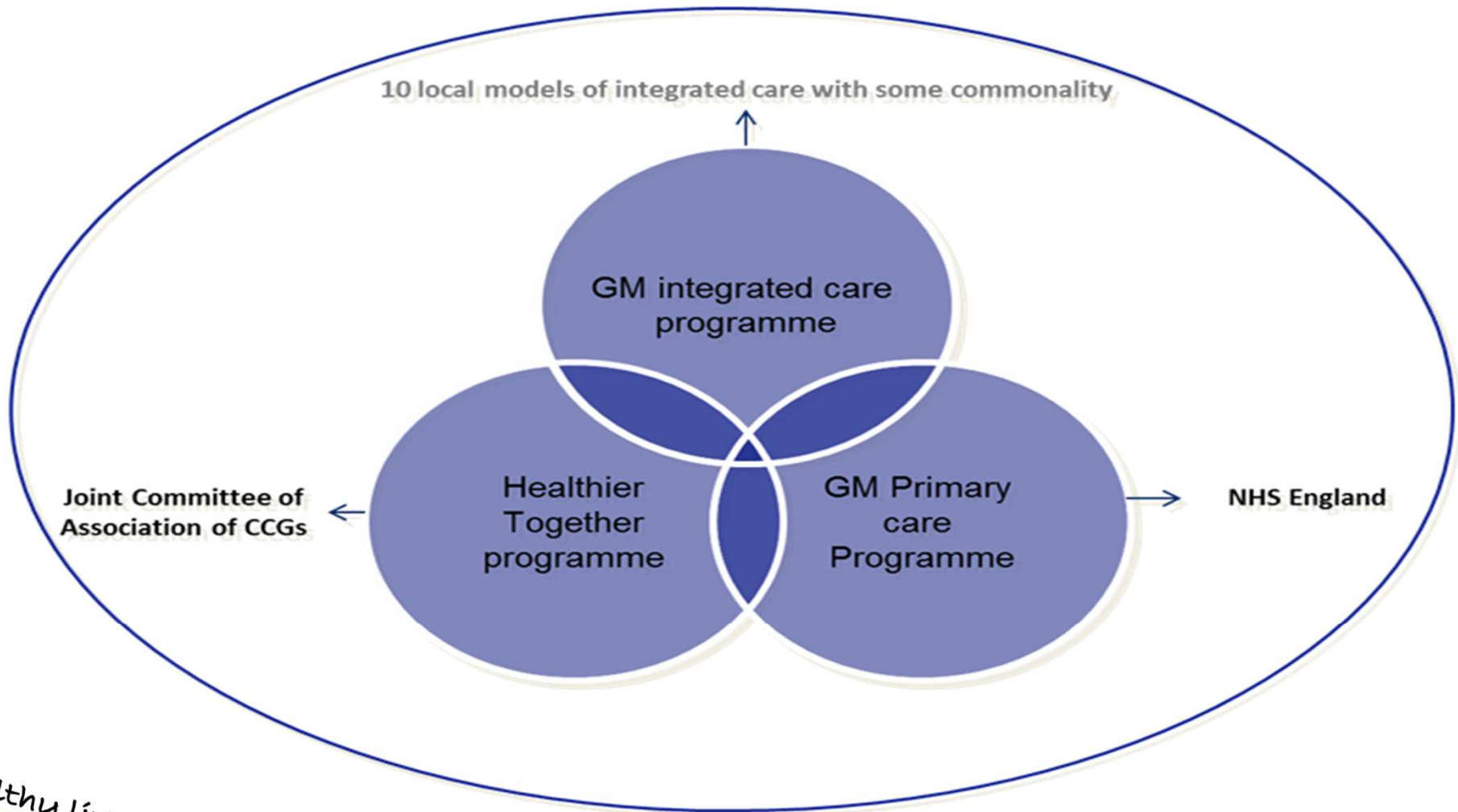
Transforming health and care services in Bury

Healthy lives strong communities

About Bury CCG

- CCGs put clinicians such as doctors and nurses in charge of making decisions about local health services
- Made up of the 33 GP Practices in the town
- We have a budget to plan and purchase a range of health services

Healthier Together – what is it?



Healthy lives strong communities

The In-Hospital reconfiguration programme is...

...a clinically led programme of work to develop safer, higher quality hospital services, including:

- Urgent, Acute and Emergency Medicine
- General Surgery, and
- Women's and Children's services

Why do we need to make these changes?

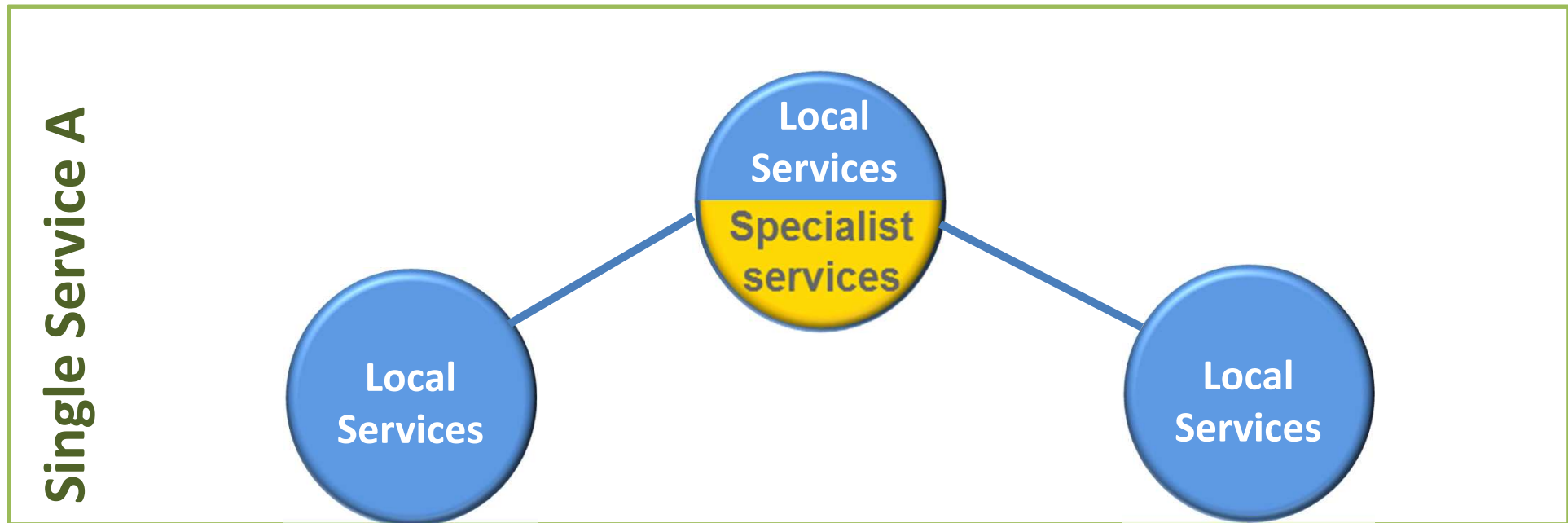
- More demand
- Greater expectation
- Variable quality and outcomes
- Fragmentation of services
- Staffing issues
- Resource limitation – equipment and premises
- Financial

The future vision

- There will be local services and specialist services
- Health services will work in a seamless way (GPs, hospital doctors, community services and social care) with patients at the centre
- Expertise will be pooled to develop centres of excellence to improve outcomes and patient experience

Future Model of Care - Single Services

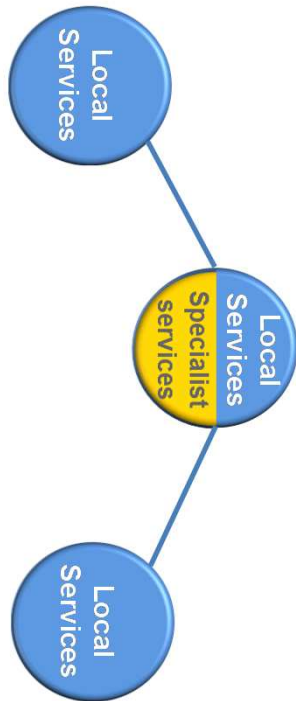
Create Single Services – multi-disciplinary teams responsible for Specialist and Local Services for a population of GM



Healthy lives strong communities

Future Model of Care - Single Services

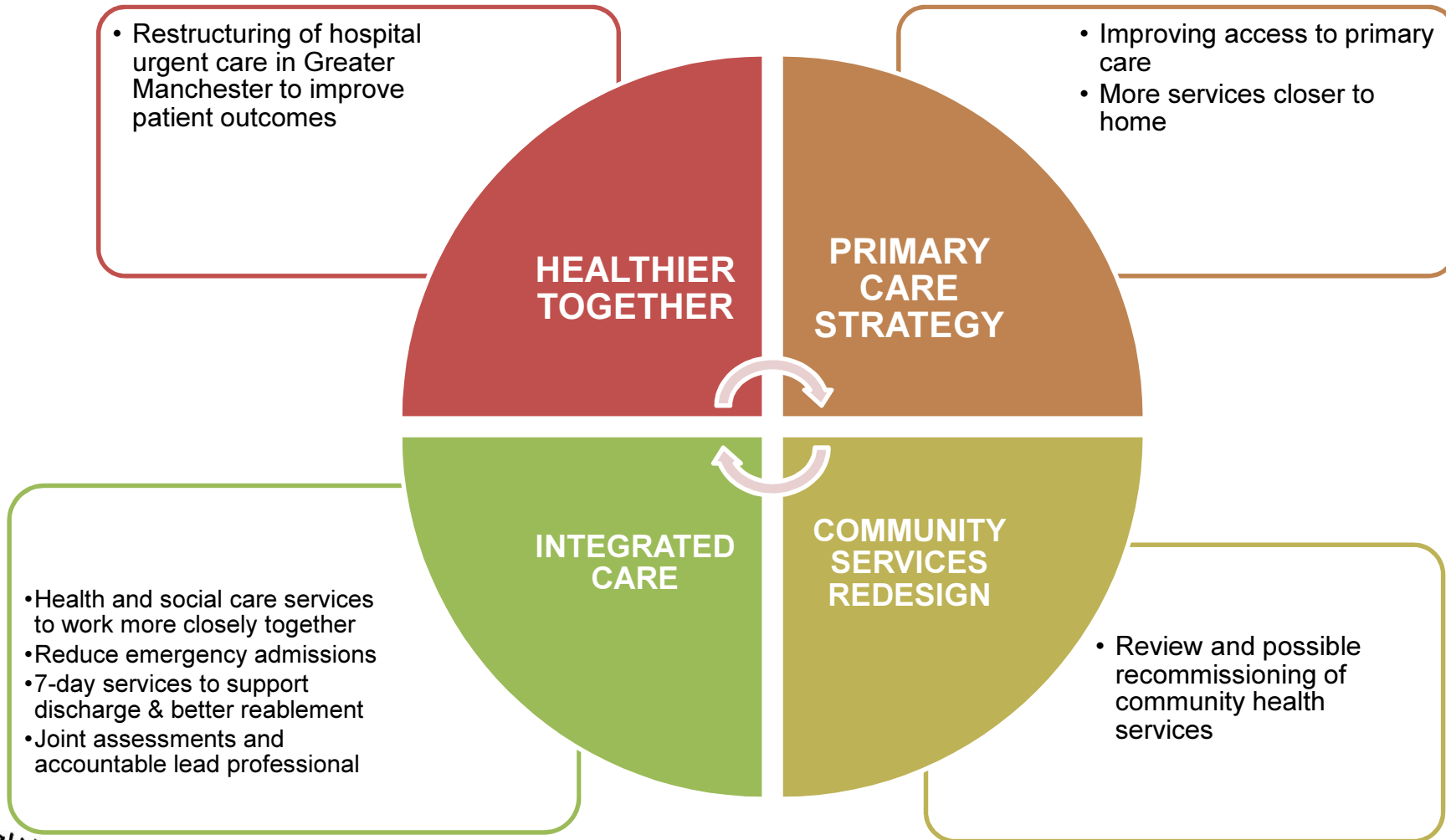
Single Service A



What is a Single Service?

- One team of staff working across the sites in the Single Service
- One performance framework
- One clinical governance structure
- One training programme

High level changes at a glance



Healthy lives strong communities

How we can achieve this

Our two year operating and five year strategic plans encompass a vision for...

Integrating health and social care

- A single, seamless service with patients at the centre
- Less emergency hospital admissions
- Supporting people to stay well at home
- Improved outcomes, more sustainable and better value of public money

Transforming hospital care / care closer to home

- Local services and specialist services - the right care, in the right place, at the right time
- Improved access / waiting times reduced
- Pooled expertise, centres of excellence, improving outcomes for patients

How we can achieve this continued...

Optimising community services

- Community Services are key to delivering integrated health and social care
- Review and possible re-commissioning of existing services to meet local needs

Enhanced primary (GP) care services

- Improved access, 7 day services
- Reduce the need for patients to be admitted to hospital
- More focus on prevention and supporting people to remain independent
- Improved access and integration with other services
 - Healthier Radcliffe

Conversation

- We've have listened to local views before
- We have had feedback
- This has informed the vision developed so far
- Now we want to test the vision so far and address any more concerns and make more adjustments



Thank you for listening and providing
your feedback

More information at...

www.buryccg.nhs.uk

www.healthiertogethergm.co.uk

Healthy lives strong communities

